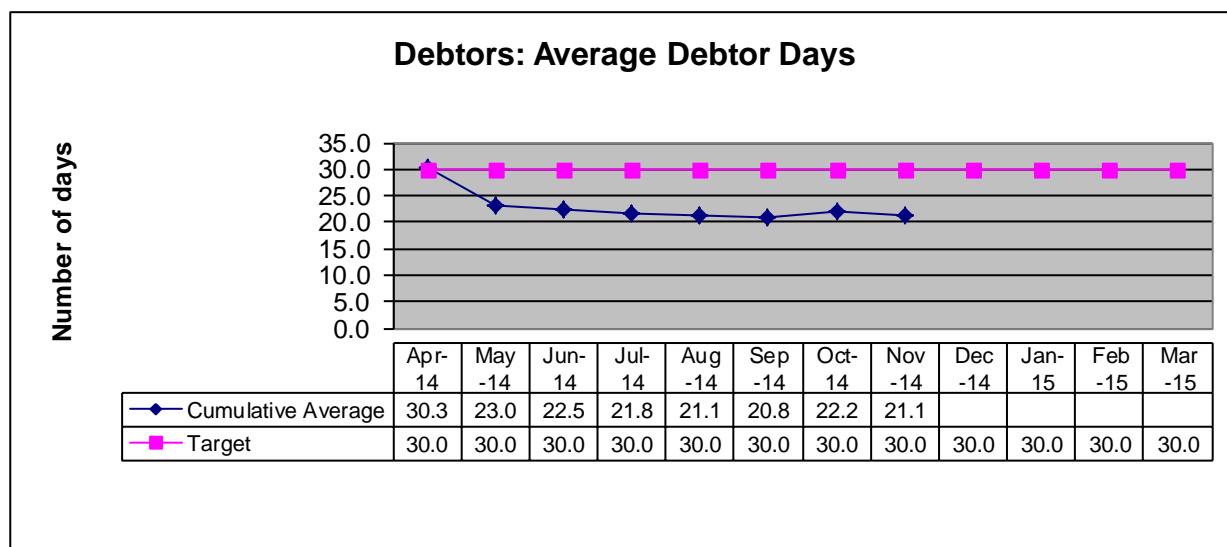


FINANCIAL INDICATORS

Debtors**Average debtor days****Level of outstanding debts owed to the Constabulary as at end November 2014**

Days	Amount (£)
1 to 30	509,325
31 to 60	222,960
61 to 90	47,908
Over 90	18,957
Total	799,150

Significant debts over 60 days

£38,400 – Public Sector

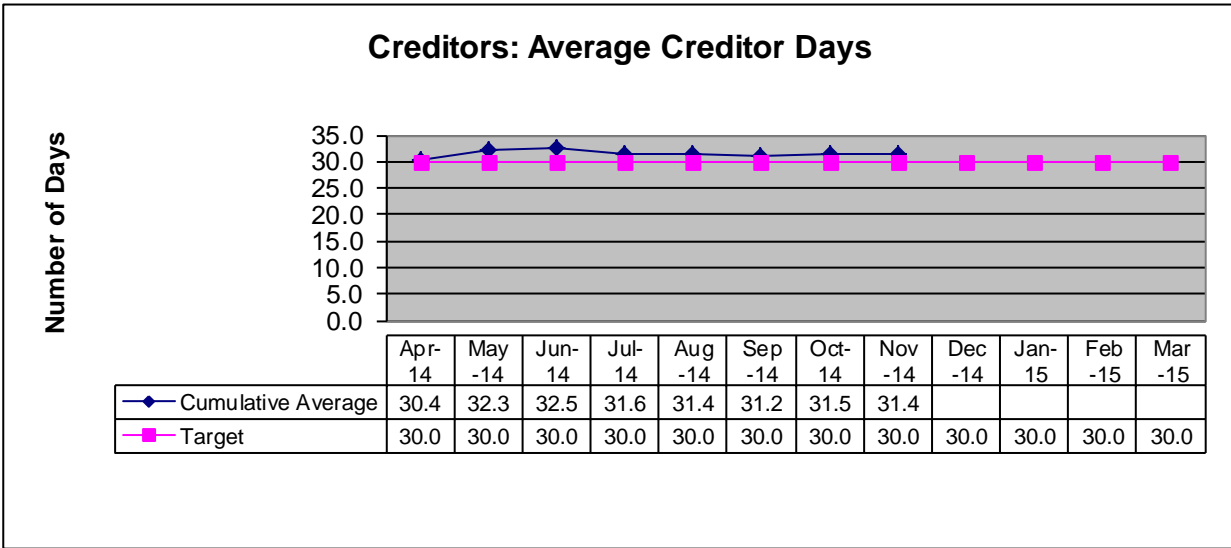
£9,069 – Public Sector

Significant debts over 90 days

£8,490 – Police Force

Creditors

Average creditor days

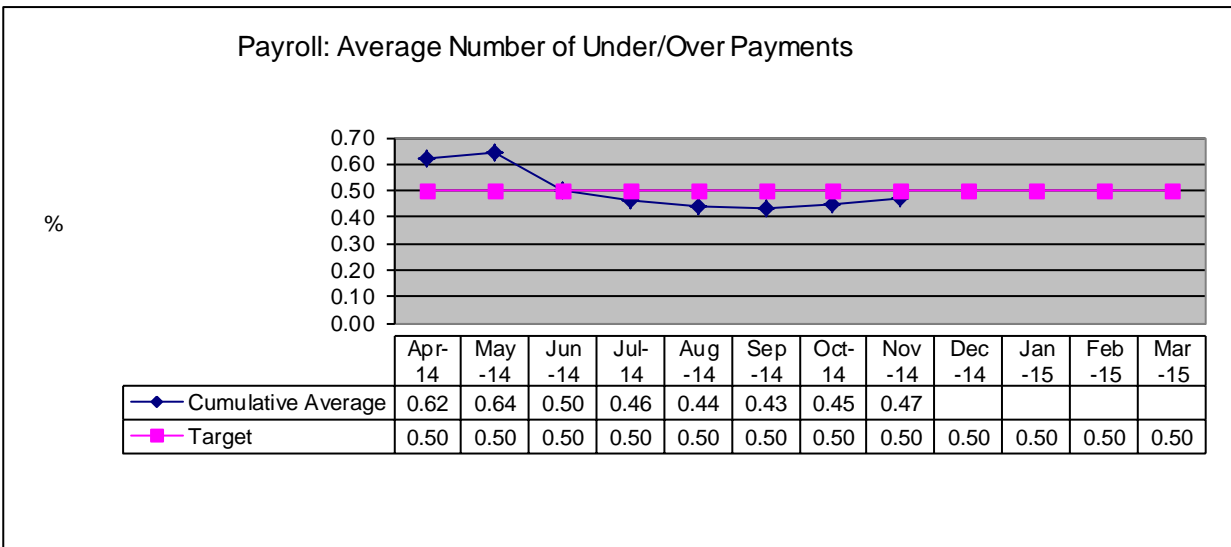


The above graph shows the total cumulative average payments to which the 30 day target applies.

Payroll

Payments made on the scheduled date Target 100% Achieved 100%

Average number of under or over payments



Pensions

Payments made on the scheduled date Target 100% Achieved 100%

Grant Claims

Submission of grant claims within the scheduled period	Target	100%
Claims to be completed in year to 31 March 2015	12	
Claims due for completion to 30 November 2014	09	
Claims completed to 30 November 2014	09	

Income

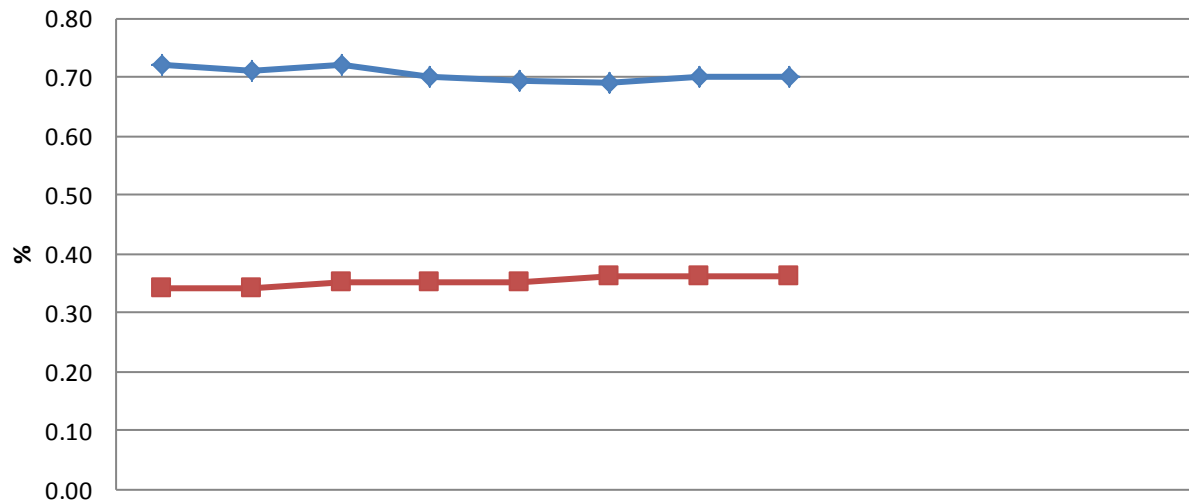
Government Grants	Budget Target	£9.953m
	Forecast Outturn	£9.941m

Treasury Management

Estimated Interest Receipts

	Average Amount Invested to date £000	Average Amount Invested Projected In Year £000	Full Year Projected Rate of Return %	Full Year Projected Interest Receivable £000
Call Account	20,854	18,196	0.61	111
Fixed Deposits	18,543	19,029	0.90	172
Total	<u>39,397</u>	<u>37,225</u>	<u>0.76</u>	<u>283</u>
Full Year Base Budget				216
(Under) / Over Recovery of Interest Earned				67

Interest Rate on Investments



	Apr-14	May-14	Jun-14	Jul-14	Aug-14	Sep-14	Oct-14	Nov-14	Dec-14	Jan-15	Feb-15	Mar-15
◆ Interest Rate Achieved	0.72	0.71	0.72	0.70	0.69	0.69	0.70	0.70				
■ Libid Rate	0.34	0.34	0.35	0.35	0.35	0.36	0.36	0.36				

Fixed Rate Deposit

Lloyds to 29.05.2015 – rate 0.95%	£10.000m
Commonwealth Bank of Australia to 20/08/2015 – rate 0.79%	£10.000m
Nationwide Building Society to 27/03/2015 – rate 0.56%	£5.000m
Nat West to 13.08.2014 – rate 0.68%	£8.000m

Limits for external debt

Authorised limit	£84.959m
Operational boundary	£77.532m
Total PWLB loans	£13.161m
PFI Liability - OCC	£26.851m
- PIC's	£37.520m
- Total	£65.111m
Total PWLB loans & PFI Liability	£77.532m
Average life of outstanding loans @ 30/11/2014	20.46 years